

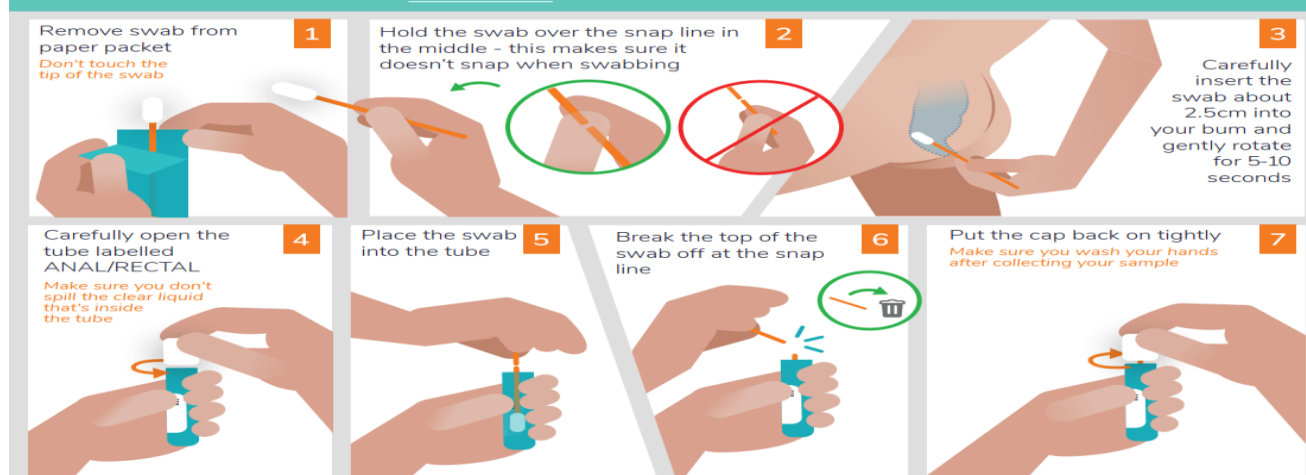
Anal (Bottom) Swab Collection –

self collection instructions

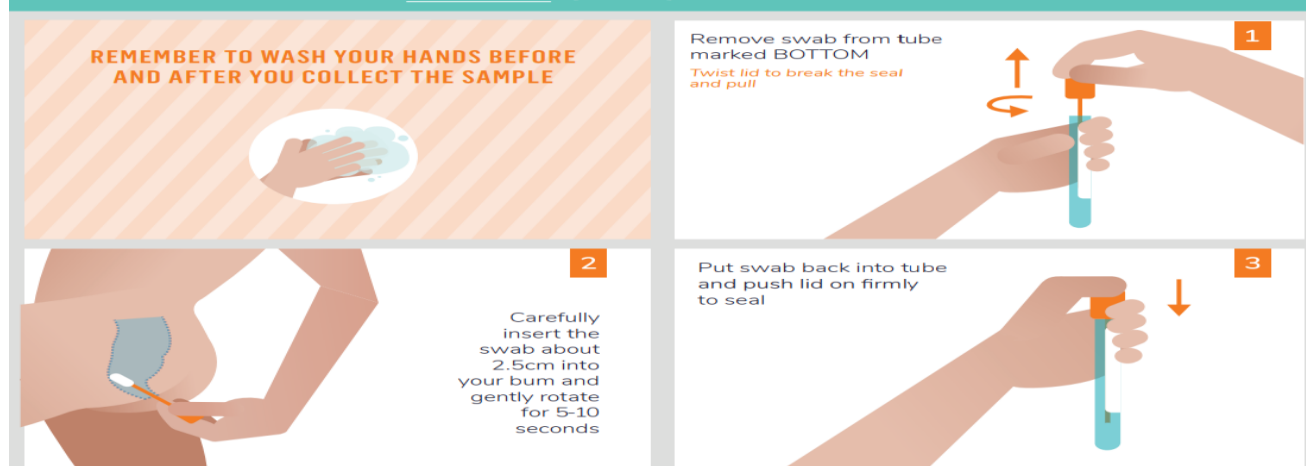
Test Procedure

1. Wash your hands with soap and water.
2. Open the packet and remove the orange swab. Don't touch the soft tip of the swab with your hands or other surfaces.
3. Hold the swab over the snap line in the middle – this makes sure it doesn't snap when swabbing.
4. Get into a position that gives you the easiest access to your anus (bottom).
5. Take one hand and spread one cheek to the side. With your other hand put the swab at the opening of your anus.
6. Push the swab about 2.5 cm inside and gently rotate the swab for 5 – 10 seconds.
7. Remove the swab from your anus. Carefully open the tube and put it into the screw top tube. Break the top of the swab at the snap line. Make sure the lid is on tightly. Wash your hands.
8. Label the tube with your full name, date of birth, date, time of collection and swab site (anal).
9. Return the labelled tube and form in the provided biohazard bag to your medical centre or to one of our collection centres.

HOW TO TAKE YOUR RECTAL (BUM) SWAB



HOW TO TAKE YOUR RECTAL (BUM) SWAB



Reminder: Have you labelled the container?

© COPYRIGHT 2023 UNIVERSAL

If you require further information regarding your test procedure please visit www.awanuilabs.co.nz and select your region.